

Model #

17C-4-99-3-40K

Hennessy Series HD Linear Tube



TITAN LED LIGHTING SOLUTIONS

Hand Crafted with Pride in The United States of America

# 12 Watt HD 4 Foot TYPE C Linear Tube Light

## High Efficiency - High Definition

### Specifications - Light Output

Total Lumen Output:  
INITIAL: 2,158 lm  
DELIVERED: 2,096 lm  
Kelvin Temp: 4000K  
CRI: 82  
Lighting Angle: 120°

### Specifications - Electrical

Voltage Range:	120 - 277V
Max. Ambient Temp:	-4° to 139°F / -20 to 59°C
Dimmable:	Yes*
Efficacy INITIAL:	181.6 lm/W
<b>Voltage:</b>	<b>120 V</b>
Frequency:	60.0 Hz
Current:	0.1070 A
Power:	12.66 W
Drive Current:	350 mA
Power Factor:	.98
Efficacy DELIVERED:	165.5 lm/W
THD:	7.9 %
<b>Voltage:</b>	<b>277 V</b>
Frequency:	60.0 Hz
Current:	0.0529 A
Power:	13.3 W
Drive Current:	350 mA
Power Factor:	.91
Efficacy DELIVERED:	157.6 lm/W
THD:	14.9 %

\* A Titan LED Dimmable driver must be used to achieve dimming.



155,000 RATED HOURS

### Notice: This lighting device Utilizes an External Driver!

Titan LED Tubes use a specifically engineered external LED driver to operate. Providing clean, surge protected, IC monitored constant current power is crucial to the output and longevity of the light emitting diodes.

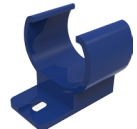
### Specifications - Mechanical

LED Count: 99 Mid Power  
Top Tier Light Emitting Diodes  
Dimensions: 47-7/8" L x 1-1/16" W x 3/4" H  
Base: G13  
Type: C  
Net Weight: 0.9 lbs / 0.4 kg  
FR-4 Glass-Reinforced Epoxy Laminate Board  
Ultra Durable, Vibration and Shock Resistant  
Clear Polycarbonate Lensing  
No Noise, No Ultra Violet Emission  
No Hazardous Mercury or Toxic Chemicals  
Extruded USA 6063 Aluminum Heat Sink  
Over 96 Percent Recyclable  
Proprietary locking D/C Connector  
Proprietary Blue ABS Non End Caps  
Non Conductive Dura Flex ABS Bi-Pins  
Replaces up to 32 Watt Fluorescent Tube Light

A Titan LED wirewhip is (Shown Right) required for driver connection and included with each tube.



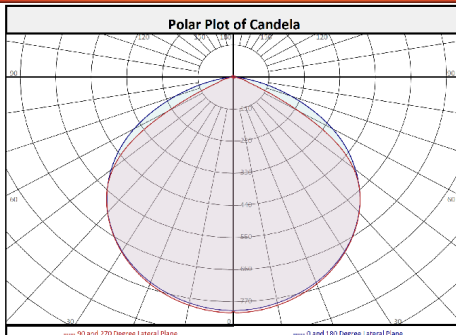
Optional Accessory: Titan LED Mounting Clips (Shown Right)



### Driver SKU ( Not Included )

- # 17-1CH-DR350-ND
- # 17-2CH-DR350-DIM
- # 17-3CH-DR350-DIM

### Light Spread Information



### Increased Safety

- Ideal for illuminating Retail Space, Offices, Classrooms, Garages, Warehouses, Etc.
- Simple and Secure Installation with industry standard Tube Based Fixtures
- Improved Bright White Color and Increased Light Levels Improve Safety and Visibility

### Improved Maintainability

- Lowers Cost of Ownership - Pays Back Purchase Amount with Energy Savings
- Industry Leading Low LED Junction Temperature
- Heavy Gauge 6063 Aluminum Heat Sink
- Environmentally Friendly, No Toxic Gasses, Chemical Free, Over 95% Recyclable
- Typically Reduces Energy Consumption 50 - 70% Over Fluorescent Tubes
- Noise Free, Instant On - Off Operation, No Warm Up Time
- Custom Designed Circuit Boards populated with Top Tier Diodes
- L-70 Rated at Over 155,000 Hours DOE TM-21
- Quickly Go Green and Reduce Carbon Footprint
- Product utilizes an External Driver to supply operation power which is Not Included

All information and images are the exclusive property of Titan LED Inc. 2020 and may not be used without permission.

All specifications and images are subject to change without notice.