

Model #

17F-4-99-6-50K-HO

Hennessy Series HD Tube Light



TITAN LED LIGHTING SOLUTIONS

Hand Crafted with Pride in The United States of America

20 Watt HD 4 Foot Frosted TYPE C Linear Tube Light

High Output - High Efficiency - High Definition

Specifications - Light Output

Total Lumen Output:
INITIAL: 3659 lm
DELIVERED: 3,127 lm
Kelvin Temp: 5000K
CRI: 81
Lighting Angle: 140°

Specifications - Electrical

Voltage Range: 120 - 277V
Max. Ambient Temp: -4° to 139°F / -20 to 59°C
Dimmable: Yes*
Efficacy INITIAL: 175.8 lm/W
Voltage: 120 V
Frequency: 60.0 Hz
Current: 0.1648A
Power: 19.51 W
Drive Current: 600 mA
Power Factor: .98
Efficacy DELIVERED: 160.3 lm/W
THD: 6.9 %
Voltage: 277 V
Frequency: 60.0 Hz
Current: 0.0790 A
Power: 19.8 W
Drive Current: 600 mA
Power Factor: .90
Efficacy DELIVERED: 157.9 lm/W
THD: 11.1 %

* A Titan LED Dimmable driver must be used to achieve dimming.

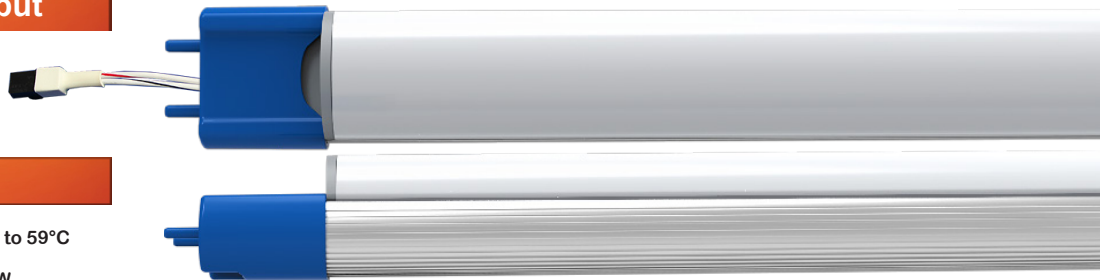
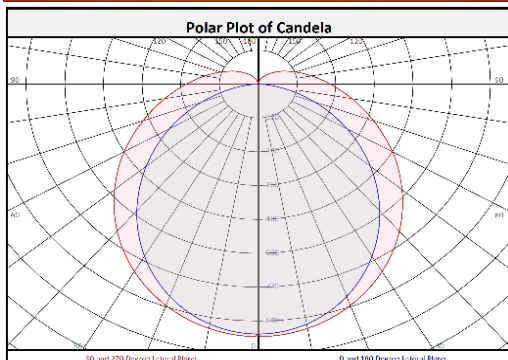
Specifications - Mechanical

LED Count: 99 Mid Power
Top Tier Light Emitting Diodes
Dimensions: 47-7/8" L x 1-1/16" W x 3/4" H
Base: G13
Type: C
Net Weight: 0.9 lbs / 0.4 kg
FR-4 Glass-Reinforced Epoxy Laminate Board
Ultra Durable, Vibration and Shock Resistant
Arched Frosted Lensing
No Noise, No Ultra Violet Emission
No Hazardous Mercury or Toxic Chemicals
Extruded USA 6063 Aluminum Heat Sink
Over 96 Percent Recyclable
Proprietary locking D/C Connector
Proprietary Blue ABS Non End Caps
Non Conductive Dura Flex ABS Bi-Pins
Replaces up to 60 Watt Fluorescent Tube Light

Driver SKU

17-1CH-DR600-ND
17-2CH-DR600-DIM

Light Spread Information



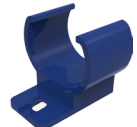
155,000
RATED HOURS

Notice: This lighting device Utilizes an External Driver!
Titan LED Tubes use a specifically engineered external LED driver to operate. Providing clean, surge protected, IC monitored constant current power is crucial to the output and longevity of the light emitting diodes.

A Titan LED wirewhip is (Shown Right) required for driver connection and included with each tube.



Optional Accessory: Titan LED Mounting Clips (Shown Right)



E466370



Increased Safety

- Ideal for illuminating Retail Space, Offices, Classrooms, Garages, Warehouses, Etc.
- Simple and Secure Installation with industry standard Tube Based Fixtures
- Improved Bright White Color and Increased Light Levels Improve Safety and Visibility

Improved Maintainability

- Lowers Cost of Ownership - Pays Back Purchase Amount with Energy Savings
- Industry Leading Low LED Junction Temperature
- Heavy Gauge 6063 Aluminum Heat Sink
- Environmentally Friendly, No Toxic Gasses, Chemical Free, Over 96% Recyclable
- Typically Reduces Energy Consumption 50 - 70% Over Fluorescent Tubes
- Noise Free, Instant On - Off Operation, No Warm Up Time
- Built with Top Tier Diodes
- L-70 Rated at Over 155,000 Hours DOE TM-21
- Quickly Go Green and Reduce the Earth's Carbon Footprint

Power Supply (Driver)

- *A Non Dimmable driver that supplies power to this product is Not included